



Beijing Polytechnic College(BPC)

2022 International Students Admission

1. International Students Admission

Students who are admitted should undertake a 3-year study to complete teaching contents in accordance with teaching programs and will be awarded with associate degree.

2. Entry Requirements

1. The applicants must be non-Chinese citizens with a valid foreign passport over the age of 18, who are good in health and conduct and willing to abide by the Chinese laws and School regulations, and respect the customs and habits of Chinese citizens.
2. Applicants with Chinese language foundation are given priority to get admitted. Students can enter into the second year of study if they pass the HSK 3 after one year of Chinese language study.

3. Major

Tourism Management

4. How to apply?

1	《Beijing Polytechnic College International Student Application Form》
2	Copy of Passport Personal Information Page
3	Copy of High School Diploma
4	Copy of High School Academic Transcript
5	One Self-introduction (about 500 words)
6	One Recommendation Letter (can be recommended by Higher School Teacher)
7	Copy of Physical Examination Chart
8	Copy of Certificate of No Criminal Record
9	Passport Photos (2 Inch color photo with white background)

Please scan all the above documents, and the packed file should be sent to the following email address: guohechu@bgy.edu.cn.

5. Admission

When students have been admitted, BPC will send them 《Visa Application for Study in China (JW202)》 and 《ADMISSION NOTICE/OFFER》.

6. Registration

1	Passport
2	《ADMISSION NOTICE/OFFER》
3	《Beijing Polytechnic College International Student Application Form》
4	Physical Examination Chart (when coming to China, it will be needed)
5	Copy of High School Academic Transcript and High School Diploma

Note: If any document is not inconsistent with the previous submitted documents, the registration will not be accepted.

7. Fees

Because of the pandemic, up to now, all the courses are delivered online, and BPC will provide scholarship and this scholarship will cover the tuition fee (20,000RMB per year).

When foreign students come to study in China, the expenses of study should be referred as follows.

Item	Expense Standard	Payer
Tuition Fee	20,000RMB per year	Scholarship will cover
Accommodation Fee	About 12,000 RMB per year	At your own expense
Medical Insurance	800 RMB per year. According to Ministry of Education of PRC, international students have to purchase insurance during their stay in China. International students are required to buy insurance on the registration day.	At your own expense
Physical Examination	About 400 RMB	At your own expense
Visa / Residence Permit	About 400 RMB	At your own expense
Living Expenses	Catering expense: about 800 RMB per month(vary from person to person); Transportation: 50 RMB per month (vary from person to person); Phone Bills: 50 RMB per month (vary from person to person); Please prepare adequate funds to cover all your expenses and carry some cash with you for your convenience.	At your own expense
Round Trip Air Ticket		At your own expense

Note: BPC will provide scholarship (only covers the tuition fees). Please pay attention to the fact that the costs of accommodation, medical insurance, physical examination, visa / Residence Permit, living expenses and round trip air ticket are not included in tuition fees. The international dormitory is a double-room with independent toilet, 24-hour hot water, free wifi and air conditioner.

Contact Information

Correspondence address:

School of International Education, Beijing Polytechnic College. No. 368#, Shimen Road, Shijingshan District, Beijing, P.R. China, 100042

Tel: 0086-10-51511267

Email: guohechu@bgy.org.cn;

Internet Address: <http://jxjy.bgy.org.cn/index.do?groupId=1>

About BPC

Beijing Polytechnic College is located in Shijingshan District, the western part of Beijing. On the southern foot of Yanshan Mountain and adjacent to Yongding River, BPC has a land area of 360 mu (24.012 hectares) with a floorage of more than 200,000 square meters. Under the administration of Beijing municipal government, BPC is the most powerful and influential regular higher vocational college nationwide.

First established in 1956 as Beijing Coal Industry School, BPC began to offer higher vocational education programs in 1994. In 2002, BPC was accredited by the Ministry of Finance and the Ministry of Education as an exemplary vocational school covered by the key construction project under the support of the central finance. In 2003, BPC was chosen as one of the top eight excellent colleges in the evaluation of talents cultivation work in higher vocational and specialized colleges organized by the Ministry of Education. In 2007, BPC was included in the Construction Plan of National Exemplary Higher Vocational Colleges, therefore becoming one of the 100 key higher vocational colleges under the support of national government. At the same year, BPC was approved to initiate the project named "the Construction Plan of National Exemplary Higher Vocational Colleges". In 2010, BPC passed the evaluation on the project named "the Construction Plan of National Exemplary Higher Vocational Colleges" with excellent performance. In 2012, BPC was recognized as one of the top 50 colleges in China for the employment of graduates. In 2015, BPC was designated by Beijing Municipality as one of the three pilot higher vocational colleges to offer High-end Technological Capabilities Training program (HTC, also named as 7-Year Training Plan). In 2016, BPC played a leading role in setting up the Urban Construction and Management Vocational Education Group, the first of its kind in Beijing. In 2017, BPC won the first place in the numbers of prizes awarded in Teachers' Information-based Classroom Teaching Competition. BPC also topped the list in the numbers of prizes received in skills competition of the national vocational students. In 2018, BPC entered into Top 50 Vocational and Technical Colleges in Asia

Pacific regions and obtained the enrollment qualification of international students.

Beijing Polytechnic College provides training in eight fields, namely manufacturing, electronic information, civil engineering, resource development and surveying, security, finance, law, and humanities education. Through many years of hard work, BPC has become an institution with a unique professional training system primarily focusing on engineering education but also offering strengths in industry and trade, economics, management, and humanities and legal education, to help meet Beijing's urgent need for construction and urban planning expertise.

Throughout this growth process, BPC has been committed to the concept of “interaction between colleges and enterprises, combination of industry and education, integration of knowledge learning and skills training” with advanced and high quality courses. In so doing, Beijing Polytechnic College has applied the personnel training mode of integrating industry and learning through programs, such as “continuously carrying out engineering practice;” “effectively recognized academic certificate and qualification certificate;” “cultivating students under real projects;” and “leading towards the overall construction process”, thereby reforming its teaching mode accordingly. Under the national strategy of Beijing-Tianjin-Hebei integration, Beijing will be recognized as the center of political life, culture, technological innovation and international exchange. Moreover, the Belt and Road Initiative, “Internet Plus” and “Made in China 2025” plans have already been put into force. Against this backdrop, Beijing Polytechnic College brings every effort to bear to cultivate engineers capable of meeting the demand of Beijing's modern industrial development and high-end application technology.

Looking forward, we are committed to building this institution into a superlative, distinguished, higher vocational college offering internationally advanced education.

► Higher Vocational Development Think Tank made an inventory of National Teaching Achievement Awards for Higher Vocational Education, Vocational College Teaching Ability Competitions, National Vocational College Skills Competitions, and BPC won the third place in comprehensive ranking, a total of 20 prizes were awarded;

► BPC was listed in Beijing Characteristic High Level Vocational Colleges

(2018);

► Urban Operation Intelligent Equipment Application Technology Group and Engineering Survey Technology entered into the list of first batch of Beijing High-level Key majors Construction (2018);

► Huawei Institute of Information and Network Engineers and Jingdong Institute of Intelligent Equipment Engineers were chosen as Beijing Vocational Engineering College and Technical Master Studio (2018);

► BPC won the first place in the 17th National College Robot Competition (2018);

► BPC became the National Modern Apprenticeship Pilot Unit (2017);

► BPC was selected as the first batch of Talent Cultivation Base for Belt & Road Initiative Countries together with Tsinghua University and Peking University (2017);

► Majors such as Mechatronics and Numerical Control were chosen into Demonstration Majors of National Vocational College Equipment Manufacturing(2017);

► BPC was the only vocational college that has won the first prizes of National Mathematical Modeling Micro-Course Teaching Competition for two consecutive years(2017-2018);

► BPC ranked first in the number of first prizes that have been awarded in National Vocational College Teacher Informatization Competitions (until 2017);

► BPC won the first place in the number of prizes that has been awarded to students in National Vocational College Skills Competitions (Until 2017);

Campus View

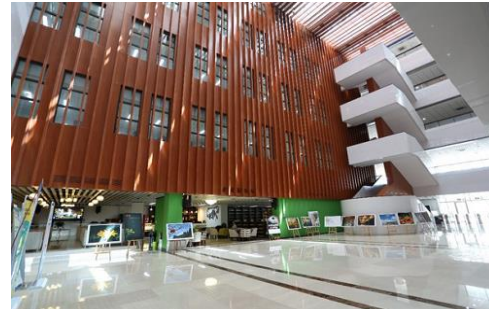
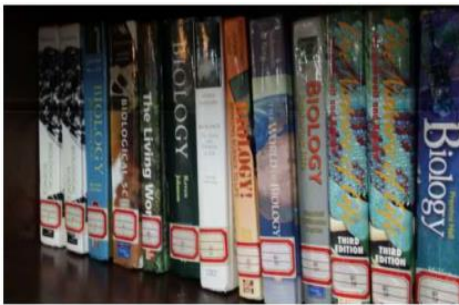


Teaching Facilities

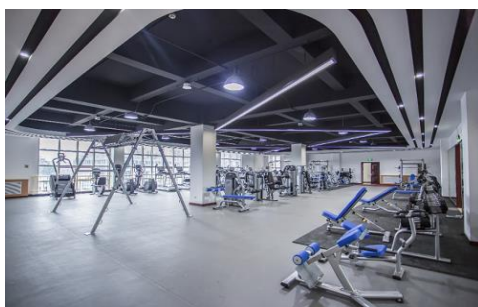




Library



Sports Facilities





Canteen



Accommodation

